



' vol. 2 SINGLE SEATS, TABLES AND ACCESSORIES

Base is tubular steel with glossy red RAL 3003 powder coat finish, tops are molded polyester resin with embedded traditional Kimono fabrics; round top can be reversed and used as a tray.

' vol. 2 SEDUTE SINGOLE, TAVOLI E ACCESSORI

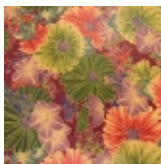
Tavolino dalla struttura leggera in filo di acciaio rosso (RAL 3003), contrapposta all'importante decorazione che usa il tessuto di Kimono tradizionali co-stampato con resina poliestere per il piano d'appoggio.

Design Tomita Kazuhiko - 2006

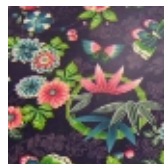
Top colors - Colori piani



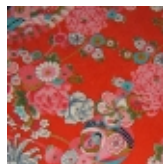
Sakura



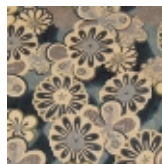
Kiku



Paradise purple



Pop orange



Imperial grey

Round table

Tavolo tondo

051

 2 Kg



42

Rectangular table

Tavolo rettangolare

052

 3 Kg



55