



' vol. 3 IN/OUTDOOR

### CHAIR, ARMCHAIR and CHAISE LONGUE

Frame is tubular stainless steel or tubular steel with powder coat finish, suitable for outdoor use; on PVC glides. Polymer cord woven on frame.

' vol.3 IN/OUTDOOR

### SEDIA, POLTRONA e CHAISE LONGUE

Struttura in acciaio inox o verniciato per uso esterno. Sottopiedi in PVC. Intreccio in filo tecnopolimero.

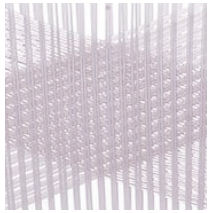
Design Patricia Urquiola - 2008



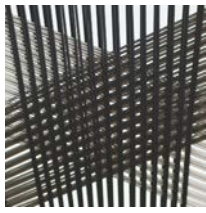
#### Technical tests - Prove tecniche

NSS UNI EN ISO 9227:2006 no defects  
Tropicalia armchair with arms  
ANSI-BIFMA X5.1-2002/8  
ANSI-BIFMA X5.1-2002/11  
ENV 581-2:2000

## version A: engineering polymer cord - Filo in tecnopolimero



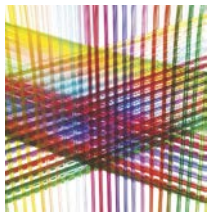
white quartz



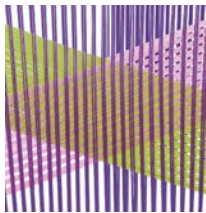
black quartz



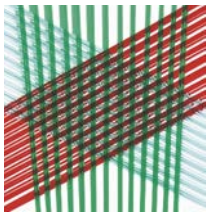
natural



mélange

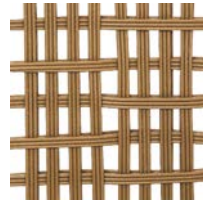


carnival

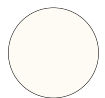


jungle

## version B: artificial leather



## Frame colours - Colori struttura



RAL 9003  
signal white



RAL 9005  
black



RAL 3020  
traffic red



stainless  
steel



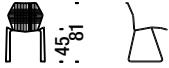
NCS  
S 5005-Y20R  
sand grey

## Chair stainless

Sedia inox

465

0,3 m<sup>3</sup> 10 Kg

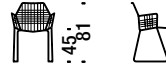


## Chair stainless with arms

Sedia inox con braccioli

468

0,3 m<sup>3</sup> 11 Kg

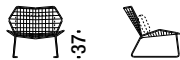


## Armchair stainless

Poltrona inox

459

0,8 m<sup>3</sup> 20 Kg

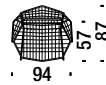
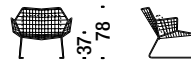


## Armchair stainless with arms

Poltrona inox con braccioli

462

0,8 m<sup>3</sup> 21 Kg

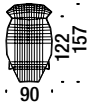
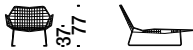


## Chaise Longue stainless

Chaise Longue inox

471

1,3 m<sup>3</sup> 25 Kg

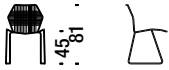


## Chair varnished

**Sedia verniciata**

464

0,3 m<sup>3</sup> 10 Kg



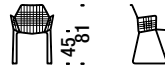
54

## Chair varnished with arms

**Sedia verniciata con braccioli**

467

0,3 m<sup>3</sup> 11 Kg



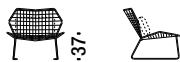
59

## Armchair varnished

**Poltrona verniciata**

458

0,8 m<sup>3</sup> 20 Kg



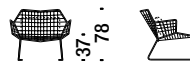
89

## Armchair varnished with arms

**Poltrona verniciata con braccioli**

461

0,8 m<sup>3</sup> 21 Kg



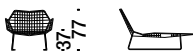
94

## Chaise Longue varnished

**Chaise Longue verniciata**

470

1,3 m<sup>3</sup> 25 Kg



90

## Armchair cushion

**Cuscino poltrona**

080

0,6 mt. 0,7 m<sup>2</sup>



57