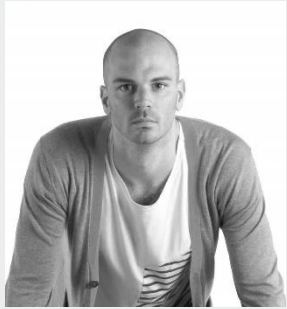




MADE IN ITALY



Seams & Canisters by Benjamin Hubert



Seams

Benjamin Hubert for Bitossi Ceramiche
Seams is a collection of five large ceramic centrepieces designed by Benjamin Hubert Ltd for iconic Italian ceramic manufacturer Bitossi Ceramiche. The collection stems from the studio's research into creating mass-produced products with one off details by manipulating a traditional ceramic manufacturing process.

The studio began the project with a study into the slip casting process to establish how it could be utilised to introduce decorative elements to the product without a secondary decorating process. The slip casting mould has been split several times, introducing additional seam lines onto the surface of the product. Rather than cleaning these seams from the product, as would be normal practice, they remain as decoration and in the condition they emerged from the mould. The components of the mould can be rotated to various positions for every piece produced, meaning no two are identical. Each of the vessels takes its shape from archetypal jar and bottle forms, referencing ceramic traditions. The colours and matte glaze are sympathetic to the forms, and keep the focus on the decorative seam elements.

Bitossi Ceramiche is one of the world's most renowned ceramics manufacturers, based in Florence. The Seams collection is Benjamin Hubert Ltd's first collaboration with the Italian company. Bitossi has previously collaborated with the Bouroullec and Arik Levy amongst others.

Material: Slip cast earthenware





Canisters

Following the success of Seams, the inaugural collection of ceramics designed by Benjamin Hubert for Bitossi Ceramiche, this collaboration goes on and it introduces to the new collection "Canisters" presented during 2015 Salone del Mobile. Canisters explore the variation and raw aesthetic of the slip casting mould line with a new more technically demanding arrangement. An innovative angular design language of mould lines decorates a series of large ceramic storage vessels complete with ceramic lid.

This collection is made in slip-casted white earthenware. The objects are glazed in 5 matt colours.



Thank you

Bitossi Ceramiche s.r.l. – Via A. Gramsci, 16 – 50056 – Montelupo Fiorentino FI – ITALY
www.bitossiceramiche.it