

Molteni & C

LOW-WAVE — HANNES WETTSTEIN 2007

1—
3



An essential upholstered bed with a fresh look – the fabric model has a soft quilted cover; the sides of the leather model have an original pattern of tiny holes (optional, specify on Order). Low-Wave is available with two different headboards: fixed or with a reclining inside part. The crosspieces connecting the guides of the bed can support single or divided slatted bases, and the height of the base can be adjusted. This bed is available with 4 feet or with 2 feet and 2 feet with wheels, to be specified when placing the Order, always in the shiny chrome finish. The feet with the wheels are mounted at the headboard side, the wheels don't modify the design of the foot.

DATASHEET

REGISTERED
DESIGN

I.2015

molteni.it

Dimensions in millimeters and inches. The right to discontinue and make changes is reserved. This information is based on the latest product information available at the time of printing.

FINISHES

COVERS

fabric - leather, completely removable.

The fabric versions are quilted. The leather versions are not quilted but can be with or without side micropiercing.

Available in fire-resistant version (TB117 and BS5852).

FEET FINISH

shiny chrome

Molteni & C

TECHNICAL INFORMATION

STRUCTURE

Made of solid wood and multi-layered wooden panels upholstered with shaped polyurethane and cover in double-layer velveteen.

HEAD REST

Metallic framework with elastic straps upholstered with polyurethane covered in cold moulded foam. Cover in double-layer velveteen.

FEET

Steel structure covered with polished and varnished plastic material. Supports in antiskid plastic.

INTERNAL CROSSPIECES

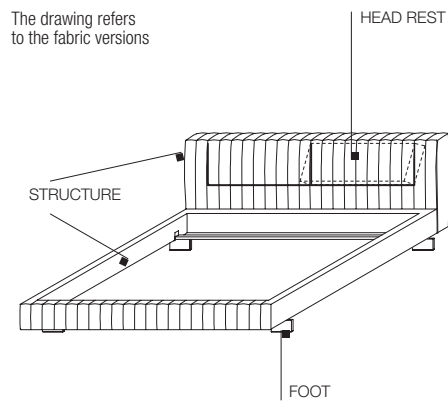
Varnished metal.

MATTRESS-BASE SPACER

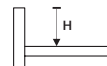
Plastic.

EXTERNAL REMOVABLE SLIPCOVERS

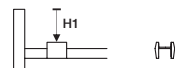
(See enclosed label, referring to the specific slipcover).



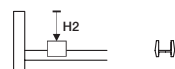
WITHOUT SPACER



WITH SPACER (1)



WITH SPACER (2)



Mattress-base height adjustment

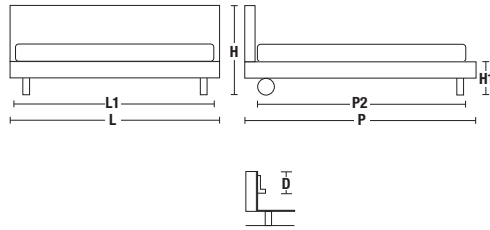
| | | |
|-----------------|----|-----|
| Without spacer | H | 115 |
| With spacer (1) | H1 | 95 |
| With spacer (2) | H2 | 75 |

DATASHEET

REGISTERED
DESIGN

I.2015

DIMENSIONS



| OUTER DIMENSIONS | | | INNER DIMENSIONS | | |
|------------------|----------------|-----------------|------------------|----------------|---|
| L | P | H | L1 | P2 | D |
| Width | Length | Height | Width | Length | Space for insertion of the slatted base |
| 1800 70 7/8" | 2300 90 1/2" | 860 33 7/8" | 1600 63" | 2000 78 3/4" | 75 3" |
| 1900 74 3/4" | standard model | | 1700 66 7/8" | standard model | 95 3 3/4" |
| 2000 78 3/4" | 2400 94 1/2" | H1 | 1800 70 7/8" | 2100 70 7/8" | 115 4 1/2" |
| QS1800 70 7/8" | on request | Bed base height | QS1550 61" | on request | |
| KS2150 84 5/8" | 2350 92 1/2" | | KS1950 76 3/4" | 2050 80 3/4" | |
| | for OS/KS | | | for OS/KS | |

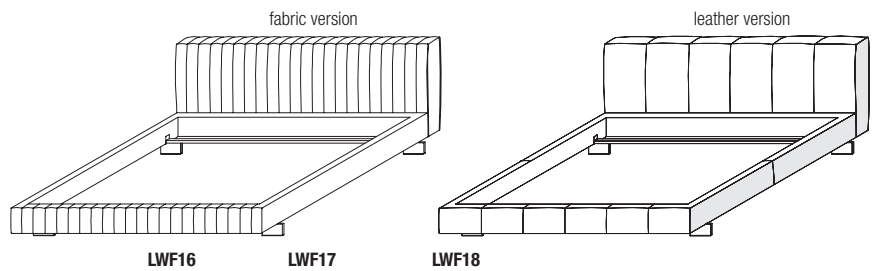
Depth of 2100 mm (82 3/4") (inner measurement) is also available on LW16-LW17-LW18.

Molteni & C

model with fixed headboard

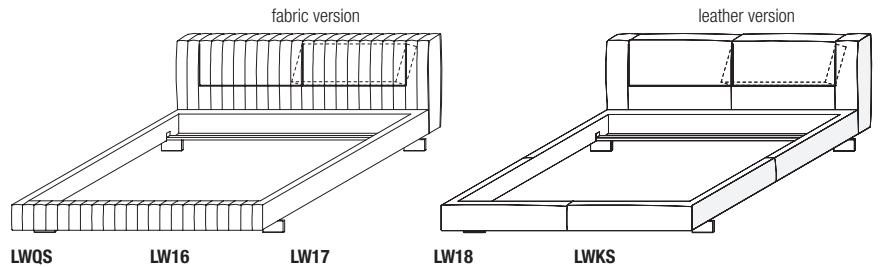
beds taking a single slatted base or 2 individual slatted bases

3—
3



model with headboard with reclining inside part

beds taking a single slatted base or 2 individual slatted bases



DATASHEET

REGISTERED
DESIGN

I.2015