



*Mitchelton Series*

Trevor Mein & Susan Knight



'Yield'  
Puissance De Lune Collection  
Mitchelton Series



'Appraise'  
Puissance De Lune Collection  
Mitchelton Series



'Tether'  
Puissance De Lune Collection  
Mitchelton Series



'Focus'  
Puissance De Lune Collection  
Mitchelton Series



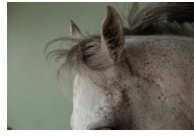
'Attentive'  
Puissance De Lune Collection  
Mitchelton Series



'Activate'  
Puissance De Lune Collection  
Mitchelton Series



'Stretch'  
Puissance De Lune Collection  
Mitchelton Series



'Flight'  
Puissance De Lune Collection  
Mitchelton Series



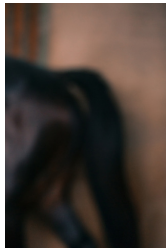
'Extend'  
Puissance De Lune Collection  
Mitchelton Series



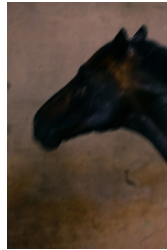
'Boundary'  
Puissance De Lune Collection  
Mitchelton Series



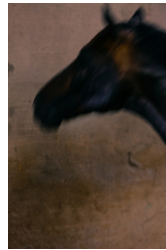
'Halt'  
Puissance De Lune Collection  
Mitchelton Series



'Stallion hindquarter'  
Americain Collection  
Mitchelton Series



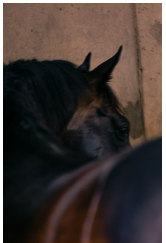
'Stallion head #1'  
Americain Collection  
Mitchelton Series



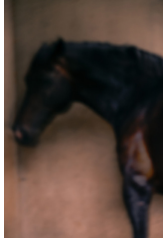
'Stallion head #2'  
Americain Collection  
Mitchelton Series



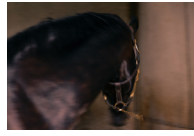
'Stallion crest'  
Americain Collection  
Mitchelton Series



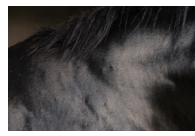
'Americain'  
Americain Collection  
Mitchelton Series



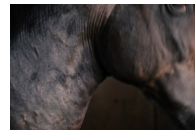
'Stallion #2'  
Americain Collection  
Mitchelton Series



'Stallion #1'  
Americain Collection  
Mitchelton Series



'Stallion neck'  
Americain Collection  
Mitchelton Series



'Stallion throat'  
Americain Collection  
Mitchelton Series

TREVOR MEIN & SUSAN KNIGHT  
MITCHELTON SERIES | PUISSANCE DE LUNE & AMERICAIN COLLECTIONS

The Mitchelton Series by artist and equestrian Susan Knight and photographer Trevor Mein evolved in response to a brief from leading interior design firm, Hecker Guthrie, for the Mitchelton Winery Hotel in Nagambie, Victoria.

This series of photographic works features two Thoroughbred stallions – an elegant grey named Puissance De Lune and 2010 Melbourne Cup winner Americain.

Knight and Mein were interested in capturing the striking beauty and power of the stallions by focusing on their remarkable musculature and the varied marks and patterning on their coats.

'Although we respect and admire the strength and athleticism of these racehorses, on this occasion our focus was intentionally more intimate,' Knight says.

'We captured the stallions in their private stable area at Swettenham Stud, observing them in a quiet space as distinct from the customary performance and public scrutiny.'

PUISSANCE DE LUNE COLLECTION

44 inch, unframed \$3,280 inc GST  
44 inch, framed - acrylic \$4,300 inc GST  
44 inch, framed - anti-reflective glass \$4,425 inc GST

50 inch, unframed \$4,250 inc GST  
50 inch, framed - acrylic \$5,400 inc GST

AMERICAIN COLLECTION

44 inch, unframed \$4,040 inc GST  
44 inch, framed - acrylic \$5,060 inc GST  
44 inch, framed - anti-reflective glass \$5,185 inc GST

50 inch, unframed \$5,230 inc GST  
50 inch, framed - acrylic \$6,380 inc GST

\*Anti-reflective glass not available in 50 inch format.

Series available in two sizes.

Limited editions of 15. All works are printed on Canson rag photographique paper, 310gsm. Museum-grade framing by Arten, hand finished using Tasmanian Oak in either natural, charcoal, black or white. Framed with image to edge of frame, dry mounted. Additional options available.

