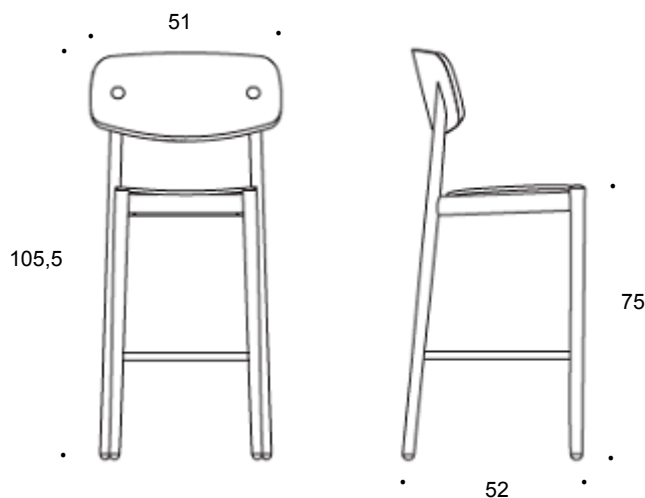


Scheda Tecnica/Technical sheet

FIZZ SGABELLO design Lorenz*Kaz, 2013

FIZZ BARSTOOL made in Italy



Dimensioni cm. 51 x 52 x 105,5
Dimensions cm. 51 x 52 x 105,5

Essenza
Wood

Faggio o Rovere
Beech or oak

Struttura
Frame

Legno massiccio vernicato o laccato
Stained or laquered massive-wood

Schienale
Backrest

Multistrati di faggio curvato impiallacciato faggio o rovere o laminato
Curved multi-ply beech; beech or oak or hpl laminate veneered

Seduta

Sedile legno:

Multistrato di faggio curvato; piallaccio di faggio o rovere

Sedile imbottito:

Multistrato di faggio curvato coperto di resina espansa D40.

Rivestimento Divina Melange 2 di Kvadrat oppure pelle Nabuk 3M, Acquario o Florida.

Rivestimento tessuto o pelle cliente.

Fabbisogno di tessuto o pelle: 1 pz. cm. 52 x 54.

Seat

Wooden seat:

Curved multi-ply, beech or oak veneered.

Upholstered seat:

Curved beech multi-ply covered by foam rubber D40.

Covering by Divina Melange 2 from Kvadrat or Nabuk 3M or Acquario and Florida leather.

Customer's own fabric or leather.

Fabric or leather supplied by the customer: 1 pc. cm. 52 x 54 each.

Imballo

1 sgabello per cartone; ingombro m3 0,29

peso lordo kg. 8,5; peso netto kg. 5,5 cad.

Package

1 barstool per box; volume cubic meter 0,29

Gross weight kg. 8,5; net weight kg. 5,5 each

bedont



1



2



3

1. Sgabello struttura rovere finitura LP53, seduta multistrati
1. Barstool oak frame open grain laquered LP53, multi-ply seat
2. Sgabello struttura faggio finitura FGP64 antracite, seduta multistrati
2. Barstool beech frame stained anthracite FGP64 multi-ply seat
3. Sgabello struttura faggio finitura FGP64 antracite, seduta imbottita Divina Melange 2
3. Barstool beech frame stained anthracite FGP64 Divina Melange 2 upholstered seat

Finitura Struttura / Frame Finishings

Struttura Faggio / Beech Frame



FG41
faggio naturale
natural beech



FG45
tinto noce medio
walnut stain



FG47
tinto ciliegio europeo
european cherry stain



FG53
tinto wengè
wenge stain



FG43
faggio sbiancato
whitened beech



FGP64
pastello antracite
anthracite black



LC 21
bianco
white



LC 22
becco d'oca
orange 144U



LC 23
rosso
red 1805U



LC 24
verde
green 575U



LC 25
azzurro
pale blue 643U



LC 26
grigio
black 7U

Struttura Rovere / Oak Frame



RV 60
rovere naturale
natural oak



RV 61
rovere sbiancato
whitened oak



RV 62
rovere moka
dark oak



RV 63
rovere grigio
grey oak



RV 64
rovere fumo
charcoal oak



LP 51
bianco RAL9003 poro
white open grain



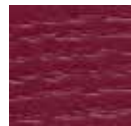
LP 52
giallo RAL1016 poro
yellow open grain



LP 53
arancio RAL2004 poro
orange open grain



LP 54
verde RAL6018 poro
green open grain

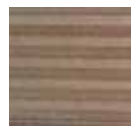


LP 55
rosso RAL3004 poro
red open grain



LP 56
nero RAL9017 poro
black open grain

Finitura Seduta / Seat Finishing



MLS
multistrati / multi-ply



A 50 - Kvadrat
Divina Melange 2



COM - tessuto cliente
client's own fabric



COL - pelle cliente
client's own leather



P 11 - pelle / leather
acquario - cuoio



P 12 - pelle / leather
acquario - t. di moro



P 16 - pelle / leather
nabuk 3M - seppia



P 17 - pelle / leather
nabuk 3M - antracite



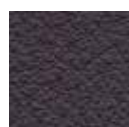
P 21 - pelle / leather
florida - 2278 tortora



P 22 - pelle / leather
florida - 2038 tabacco



P 23 - pelle / leather
florida - 2062 marrone



P 24 - pelle / leather
florida - 2266 cioccolato



P 25 - pelle / leather
florida - 2002 nero