

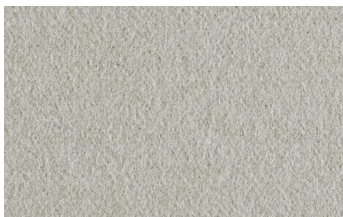
# IBLINE



CARTELLA TESSUTI | FABRIC REFERENCE CHART

HE

**Hero Kvadrat**  
96% Lana vergine/New wool  
4% Nylon



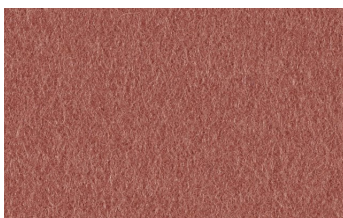
THE211



THE141



THE791



THE541



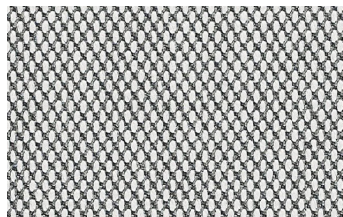
THE991



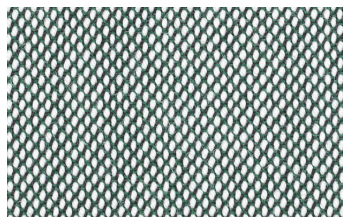
THE381

ST

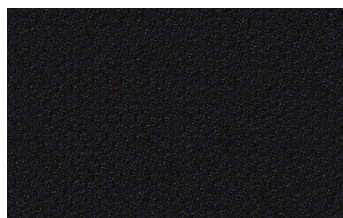
**Steelcut Trio 3 Kvadrat**  
90% Lana vergine/New wool  
10% Nylon



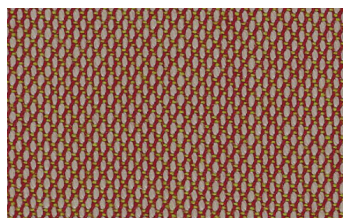
TST133



TST916



TST195



TST515



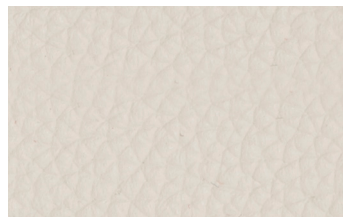
TST716



TST376

LN

**Panama Dani**  
100% Pelli bovine europe  
100% European cow hides



LN5506



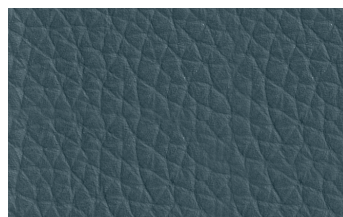
LN5290



LN5300



LN5400



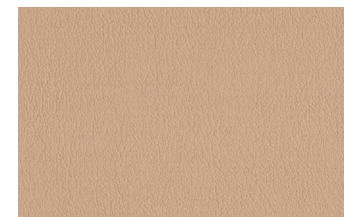
LN5428



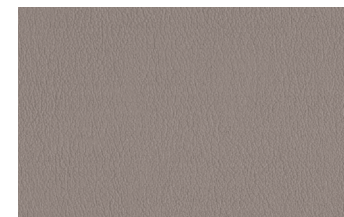
LN5320

FE

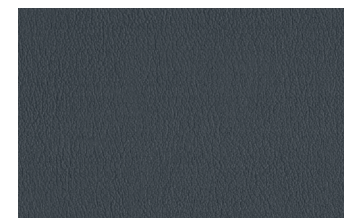
**Extrema AU Flukso**  
63% PU  
29% COT  
8% PES



TFE350



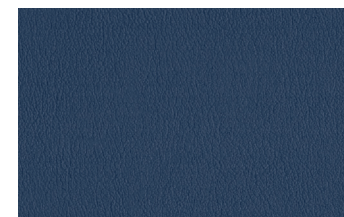
TFE4450



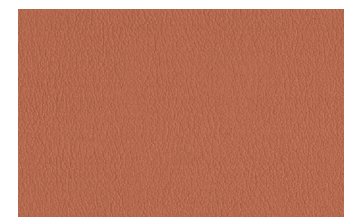
TFE2150



TFE950



TFE1950



TFE3250

**Hero**  
Kvadrat

580 g/mtl | g/lin.m  
45.000 Martindale



0575/15



**Steelcut Trio 3**  
Kvadrat

770 g/mtl | g/lin.m  
100.000 Martindale



0575/17



**Panama**  
Dani

sp | thk 1,0-1,2 mm  
resistenza allo strappo/  
tear resistance  
20 N | EN ISO 3377 -1  
resistenza alla flessione/  
flex resistance  
nessuna rottura  
in 50.000 cicli/  
no damage  
in 50.000 cycles  
EN ISO 5402

**Extrema AU**  
Flukso

480 g/mq | g/sqm  
150.000 Martindale

