



© COPYRIGHT 2017 MDF ITALIA SRL SOCIETA' UNIPERSONALE

2017

SQUARE

Designed by Bruno Fattorini

Square is the new wall system featuring a simple design, far from decorations and "purged" of anything superfluous. The system intercepts the metamorphosis of furniture in the living area which, with the advent of the Internet and the big change in IT services, from equipped wall has turned into a furnishing object: a display unit more than a storage-one. In fact its function is to show, more than to store. Its storage function is both visible and concealed.

Square has been studied to develop an endless number of compositions with a remarkable capacity to adapt to space and to acquire variations during time.

CHARACTERISTICS

The system consists of 8 elements made of medium density fibreboard panels with 4 chamfered sides and polymeric sheet back covering.

Shelves are high-pressure full colour Fenix laminate.

Single element size is about L60 x H60 cm with shelf depth 18 and 25cm, depending on the type.

Elements are available in the monocromatic version white and medium grey.

Every module is made of a fibreboard panel covered on the front with white or medium grey Fenix laminate, and at the back with a white or medium grey polymeric sheet. Shelves in high-pressure full colour Fenix laminate, white and medium grey.

ELEMENTS

ELEMENT X: simple panel

ELEMENT Y: panel with double shelf, depth 18cm

ELEMENT L: panel with L-shaped shelf, depth 18cm

ELEMENT T: panel with T-shaped shelf, depth 18cm

ELEMENT C: panel with C-shaped shelf, depth 25cm

ELEMENT H: panel with H-shaped shelf, depth 25cm

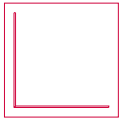
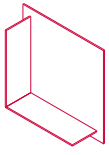
ELEMENT Z: storage panel with H-shaped shelf, depth 25cm

Some elements - element X and element Z - are also available in the material version in wood, brass, stone and black iron.

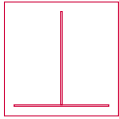
Every element is fitted with wall connections (adjustable) and horizontal bars for easy wall-mounting.

The product has ready-made holes to allow its use in the four main rotations.

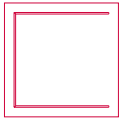
Every rotation corresponds to a different use and function, and also to a new design and dialogue.

SQUARE**ELEMENT L**

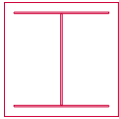
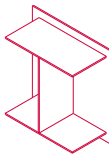
L59,5 H59,5 D21

ELEMENT T

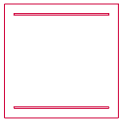
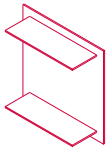
L59,5 H59,5 D21

ELEMENT C

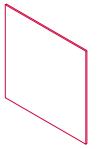
L59,5 H59,5 D28

ELEMENT H

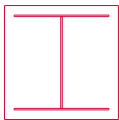
L59,5 H59,5 D28

ELEMENT Y

L59,5 H59,5 D21

ELEMENT X

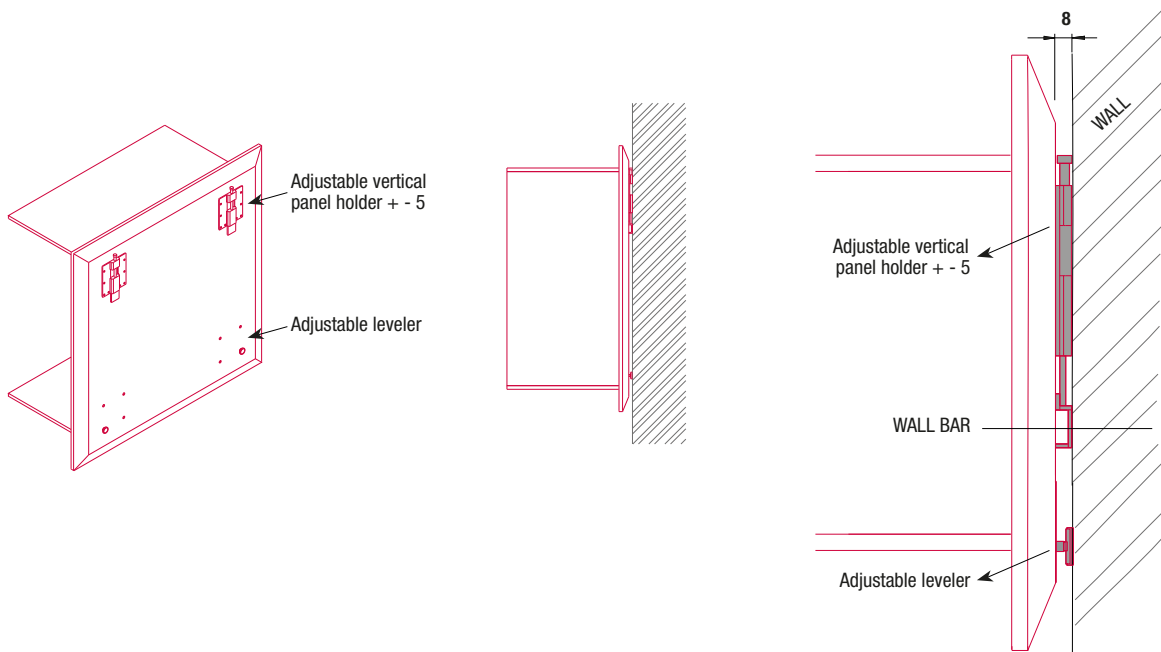
L59,5 H59,5 D3

ELEMENT Z

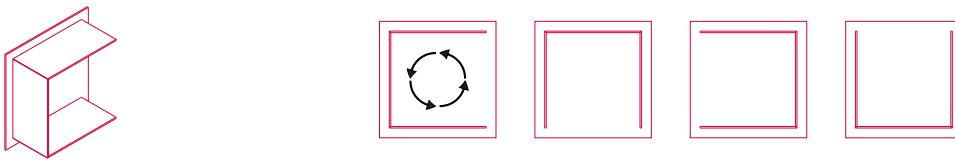
L59,5 H59,5 D28

SQUARE

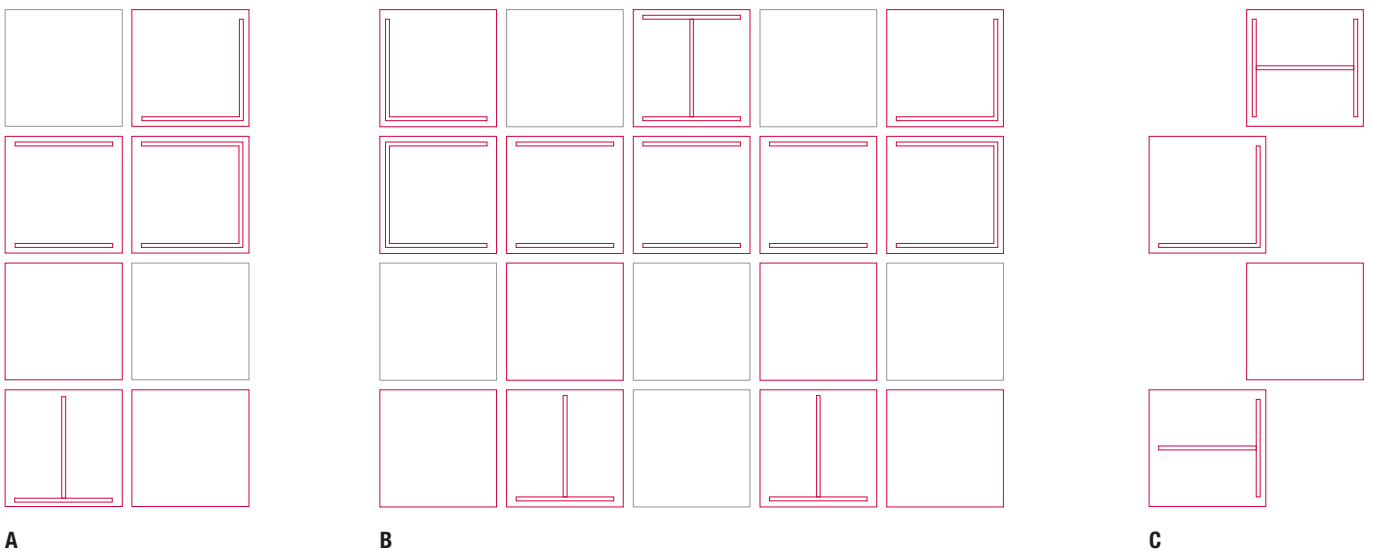
WALL HANGING SYSTEM



ROTATION OF THE MODULES: all modules can be 360° mounted when assembling them as per examples provided.



EXAMPLES OF COMPOSITION



Finishing

The number in the dot corresponds to the number of colour/material finish.

Here below, in the section FINISH OPTIONS, please note all the colours of the materials used for this product.

MODULAR UNITS L / T / C / H / Y

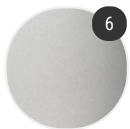
Structure



Fenix

MODULAR UNITS X / Z

Structure



Material

Finish options

STRUCTURE

Fenix



Fenix matt
white X020



Fenix matt
medium grey
X021

Material



reconstructed
stone X084



wood X085



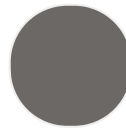
black iron



brass X086



Fenix matt
white X020



Fenix matt
medium grey
X021