

systemtronic

datasheet CONEE S umbrella stand

General Description:

Conee S in the smallest model of the family of products Conee, where the aesthetics is conical irregular, composed by plant pots and paper bins produced in steel, and a leatherette pouf with casters that makes easier it's movement. It's disposition in different functionalities and finishes offers a wide range of possibilities.

Designer: Victor Carrasco



Technical Description:

Material:

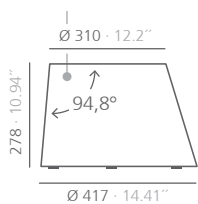
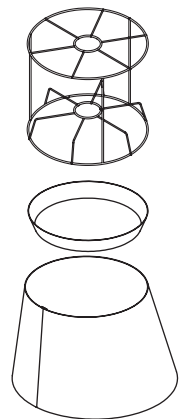
Frustraconical structure with the axis inclined composed by a bent plate of cold laminated steel of 1,5mm with process before being painted with polyester primer. Lateral inner closure from a reinforced joint rivet and a welded lower closure base skeleton of star shape supporting legs 3.

Dimensions:

CONEE_S: Ø417x Ø310x278 mm Ø14,41"x Ø12,2x10,94"

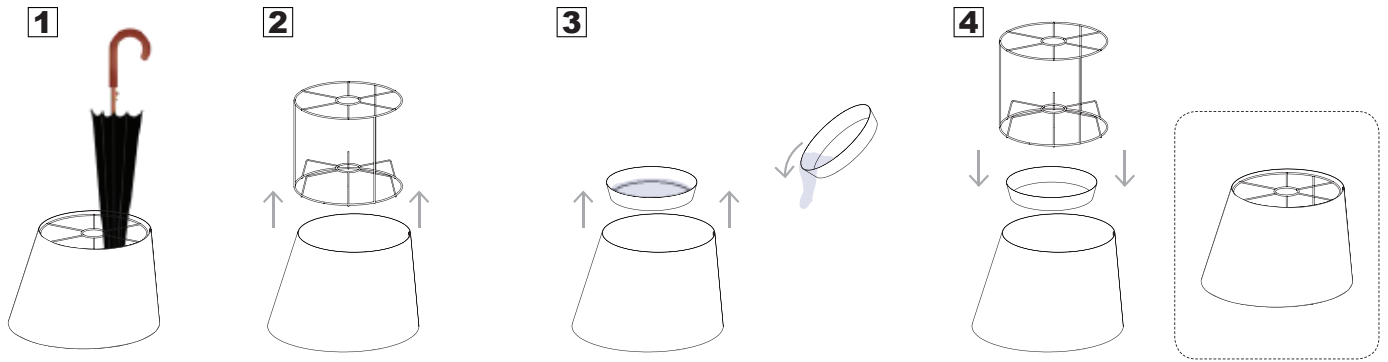
Conee S umbrella stand:

Includes an inside a tubular structure Ø4mm made of galvanized rod that forms different departments to place the umbrella and a plate of injected plastic to collect water.



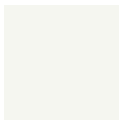
SI units: mm and inches.

How to use it:



Finishes:

Conee_S_umbrella stand



textured
white



textured black
RAL 9011



textured
forged grey

*Polyester paint

Consult for special dimensions or any other modification.